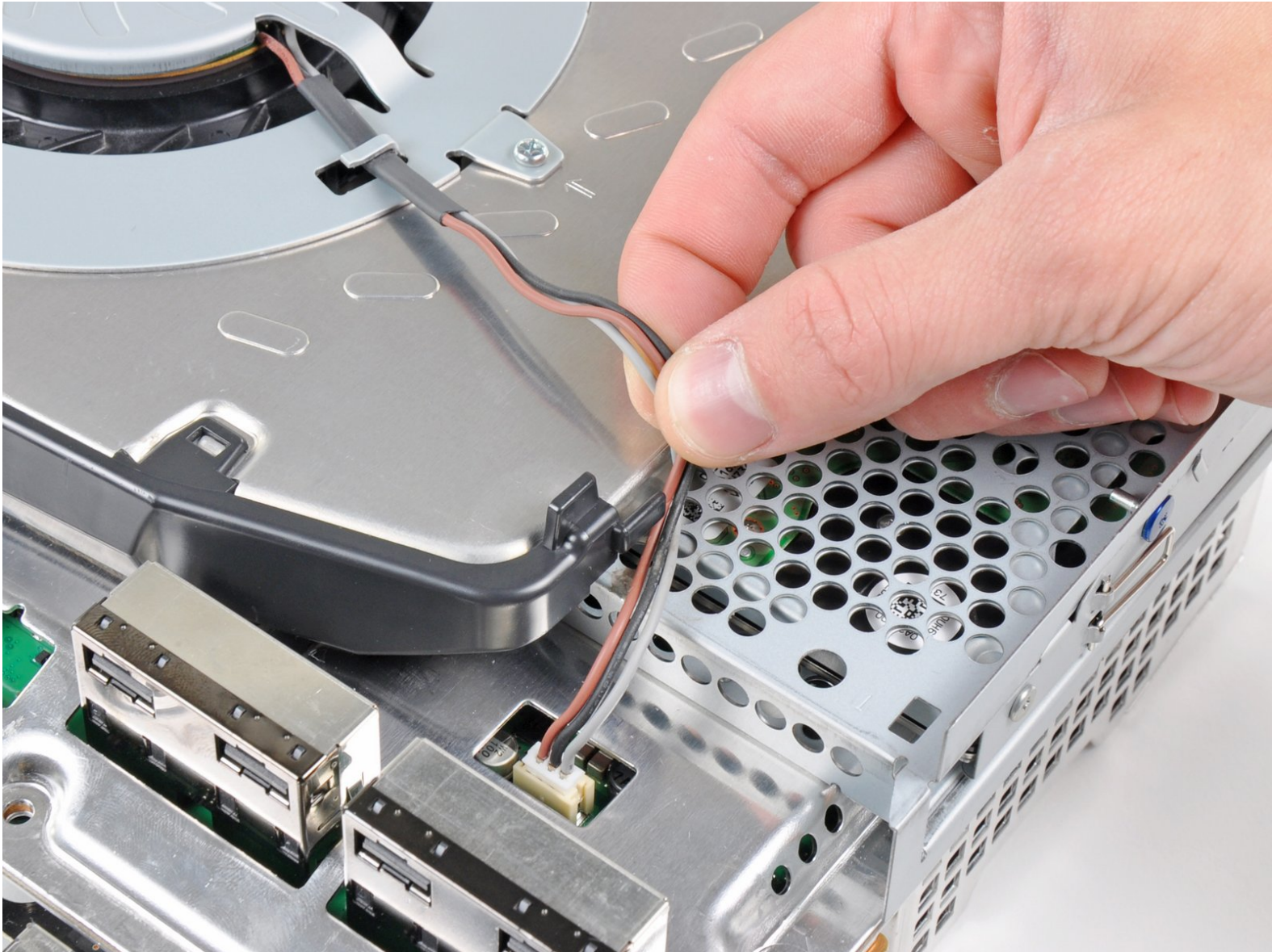




# PlayStation 3 Heat Sink Replacement

Written By: Walter Galan



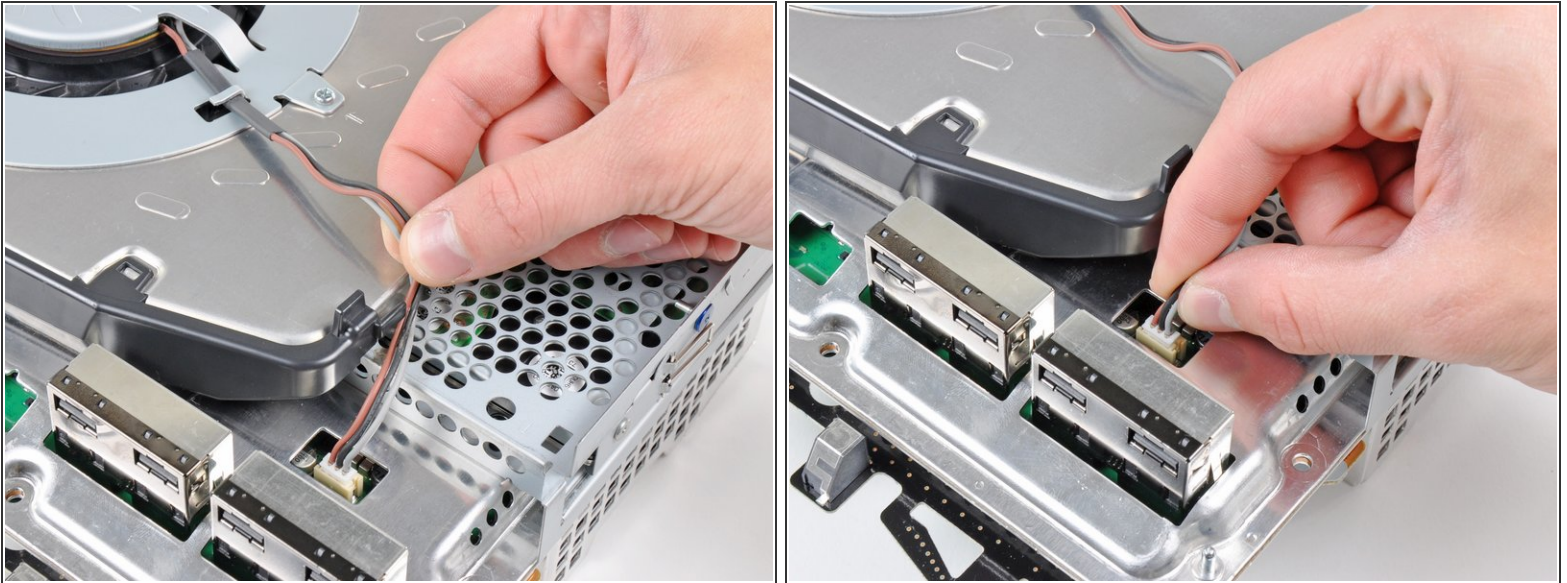


## PARTS:

- [Sony PlayStation 3 Models A B C E Heat Sink](#) (1)
- [Sony PlayStation 3 Heat Sink Clamps](#) (1)

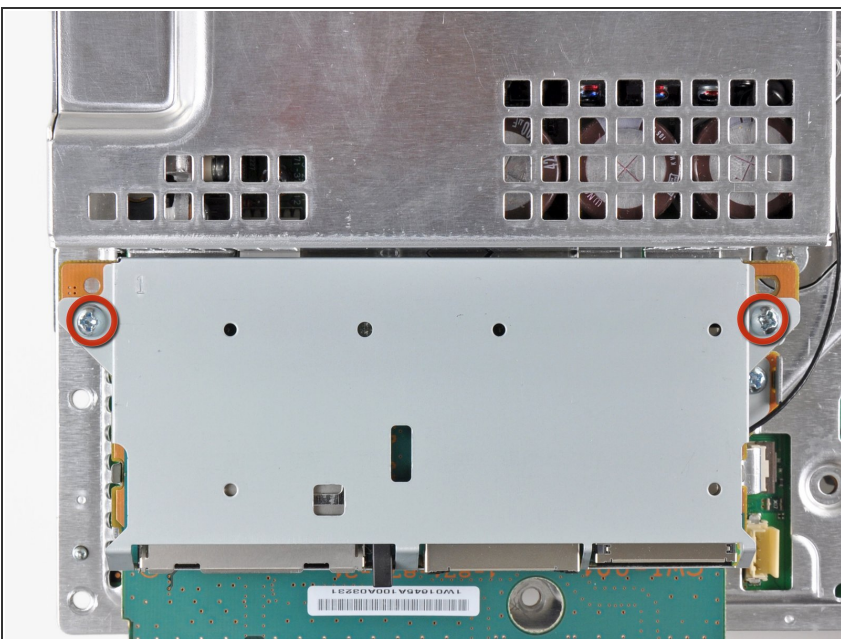


## Step 1 — Heat Sink



- De-route the fan cables from the plastic finger molded into the heat sink.
- Disconnect the fan from the motherboard.
- ⓘ Pull the connector straight up and out of its socket.

## Step 2



- Remove the two 9 mm Phillips screws securing the memory card reader to the chassis.

## Step 3



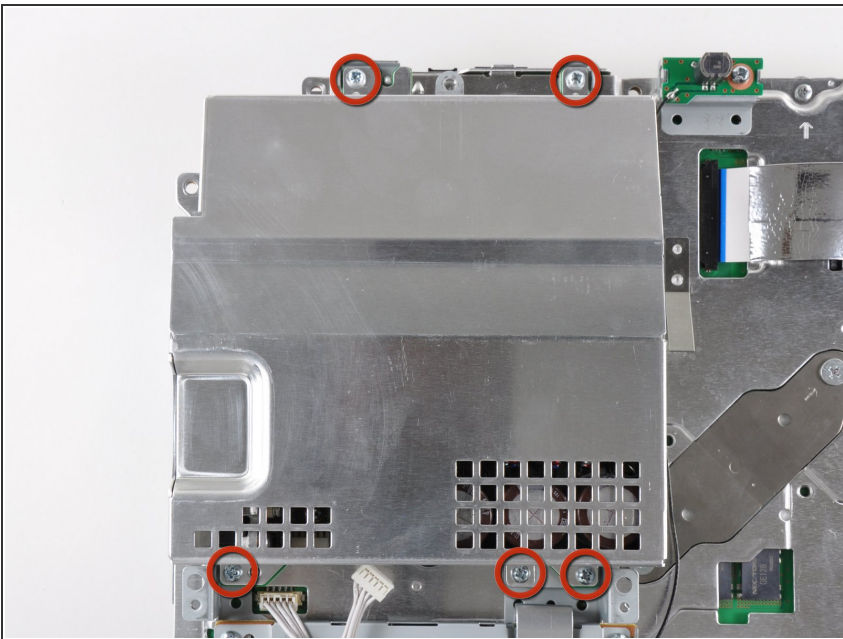
- Lift the memory card reader out of the PS3 enough to access its ribbon cable.
  - Flip up the retaining flap on the memory card reader ribbon cable socket.
- ⚠ Be sure you are prying up on the retaining flap, **not** the socket itself.
- Pull the ribbon cable out of its socket and remove the memory card reader.

## Step 4



- Disconnect the DC-In cables from the front of the heat sink.
- ⓘ Pull the connector toward the front of the PS3.

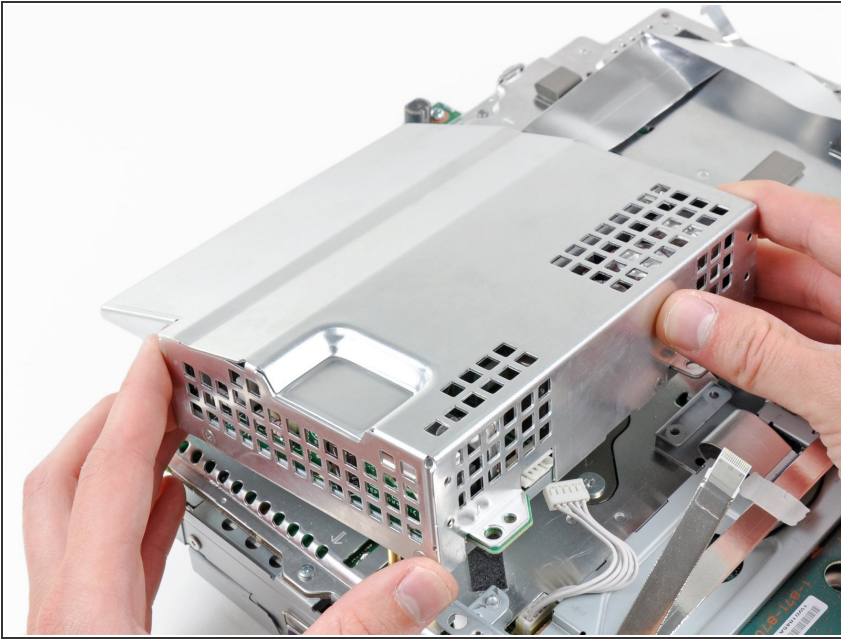
## Step 5



- Remove the five 9 mm Phillips screws securing the power supply to the chassis.

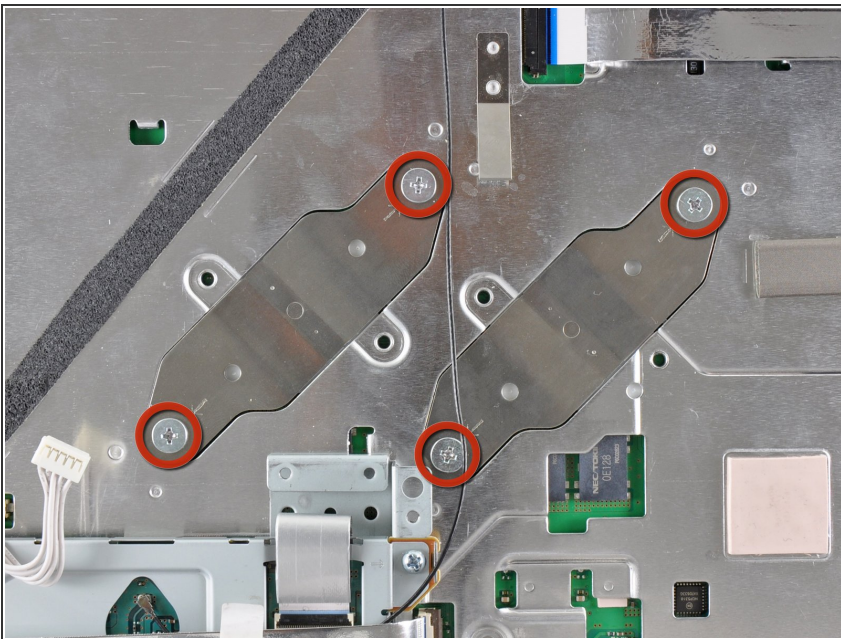


## Step 6



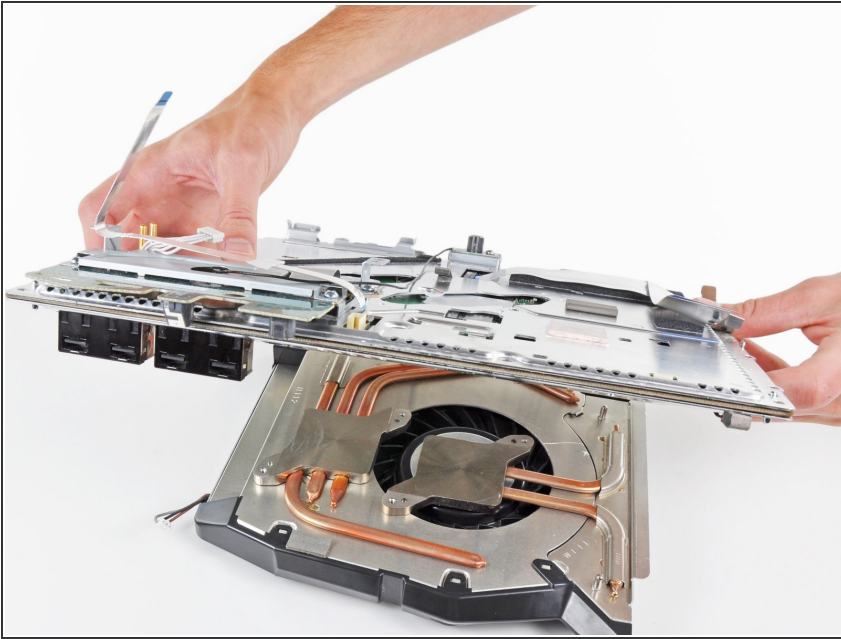
- Lift the power supply by its front edge to clear the two posts attached to the motherboard.
- Remove the power supply.

## Step 7




- Remove the four 16.5 mm shouldered Phillips screws securing the heat sink to the motherboard.
- Remove the two brackets held under the screws you just removed.


## Step 8




- Lift the motherboard assembly off the heat sink.

 The heat sink may still be held in place by the thermal paste. If this is the case, gently pry the heat sink away from the motherboard housing. Make sure to not bend the copper piping on the heat sink.

- Be sure to apply a new layer of thermal paste when reattaching the heat sink.

 Never applied thermal paste before? Our [thermal paste guide](#) makes it easy.

 If you're following the YLOD repair guide, stay tuned for where to apply the replacement thermal paste.

To reassemble your device, follow these instructions in reverse order.